



9 Albert Embankment, London
SE1

GARTONJONES.COM



9 Albert Embankment, London , SE1

£800 Per Week

A stunning, direct river facing, 2-bedroom apartment offering 1,116sq.ft (103.7sq.m) available to rent in 9 Albert Embankment, a popular residential development conveniently located on London's Southbank, between Vauxhall & Lambeth Bridges. This spacious property benefits from an open plan reception room with fully integrated modern kitchen, floor to ceiling windows with access to a large private balcony enjoying lovely views of the River Thames towards the Houses of Parliament and beyond, two double bedrooms and two modern bathrooms (1 en-suite). 9 Albert Embankment has a 24-hour concierge and on-site convenience store and is located just to the South side of Lambeth Bridge within walking distance to Parliament Square, London's trendy South Bank and the West End. Transport links are excellent with a frequent bus service on the doorstep and the rail/tube links of both Vauxhall and Waterloo within easy reach.

Please note furniture may differ to that shown in the current photos.

- 2 Bedrooms
- 1,116sq.ft (103.7sq.m)
- Direct River Facing
- 2 Bathrooms (1 En-Suite)
- Open Plan Reception
- Parking Available via Separate Agreement
- Large Balcony
- 24 Hour Concierge
- On-Site Convenience Store
- 0.5 Miles to Vauxhall Station

GARTON JONES.COM

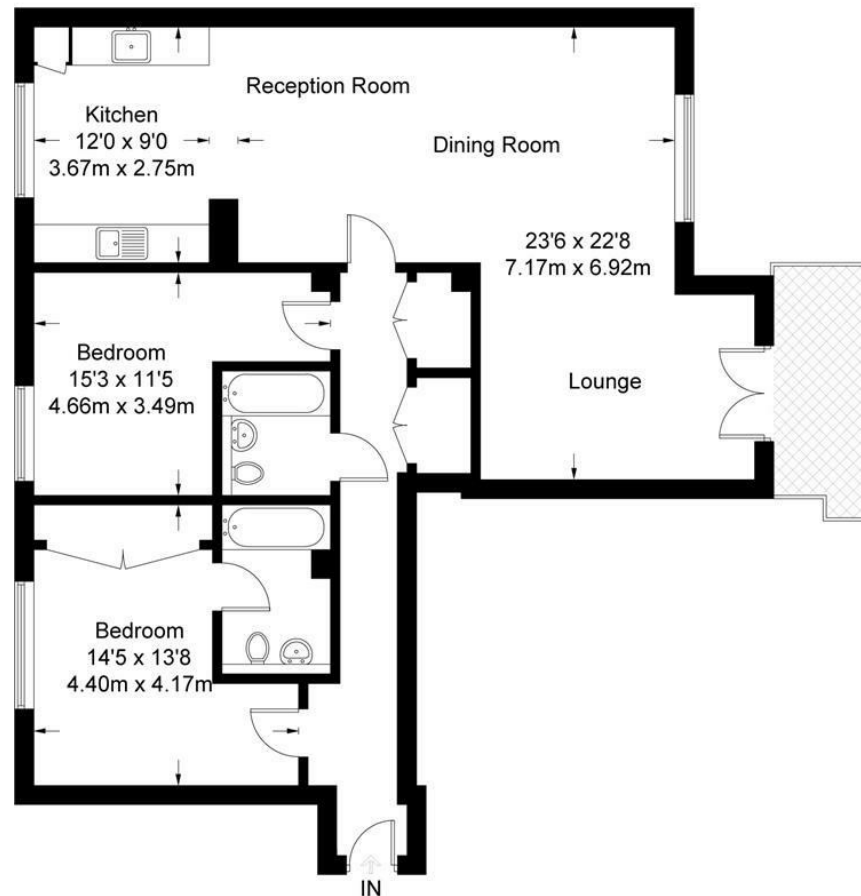
9 Albert
Embankment
London
SE1 7SP

Lettings:
+44 (0) 20 7735 1888
nineelms@gartonjones.com
www.gartonjones.com



Albert Embankment

Approximate Gross Internal Area = 1116 sq ft / 103.7 sq m



Not to scale, for guidance only and must not be relied upon as a statement of fact.
All measurements and areas are approximate only and have been prepared in
accordance with the current edition of the RICS Code of Measuring Practice.

